

Mass Configuration Tool

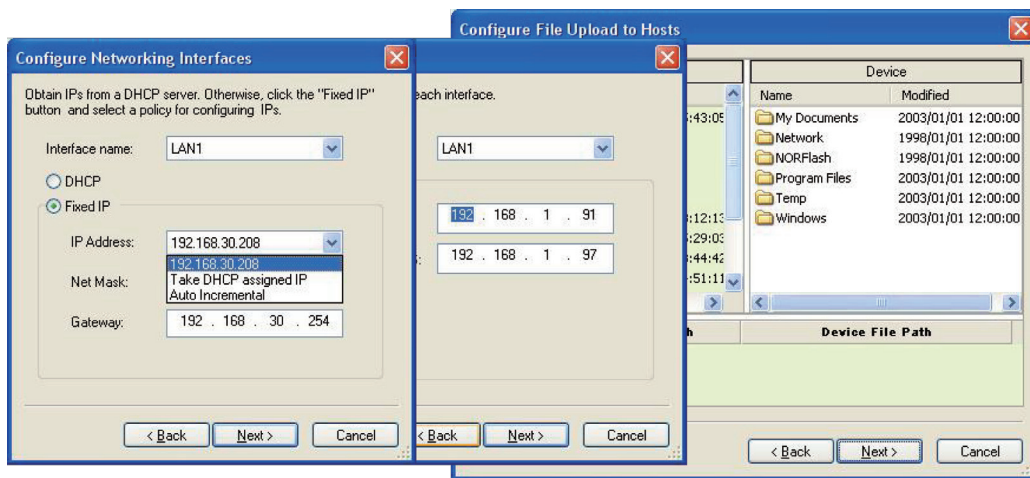
: Mass Configuration Tool

Moxa Mass Configuration Tool is a time-saving tool that helps users simultaneously deploy many tasks to Moxa's embedded computers. This tool is particularly useful for deploying programs or tasks to a large number of identical devices. Users can configure the settings at the control center, and then deploy them to all computers at once. This mass deployment saves time on system configuration and program

settings. The more computers you have, the more time you save. After using Mass Deployment Tool to configure a computer, the computer can be installed at a remote site.

: The Beauty of Mass Configuration Tool

- Fast and simple initial configuration (under 15 minutes)
- Power on then DONE
- Management reports available



Mass Configuration Tool